

The American Sign Language Handshapes



A



Open A



B



Open B



Bent B



C



D



E



F



Open F



G



H



I



K



L



Bent L



M



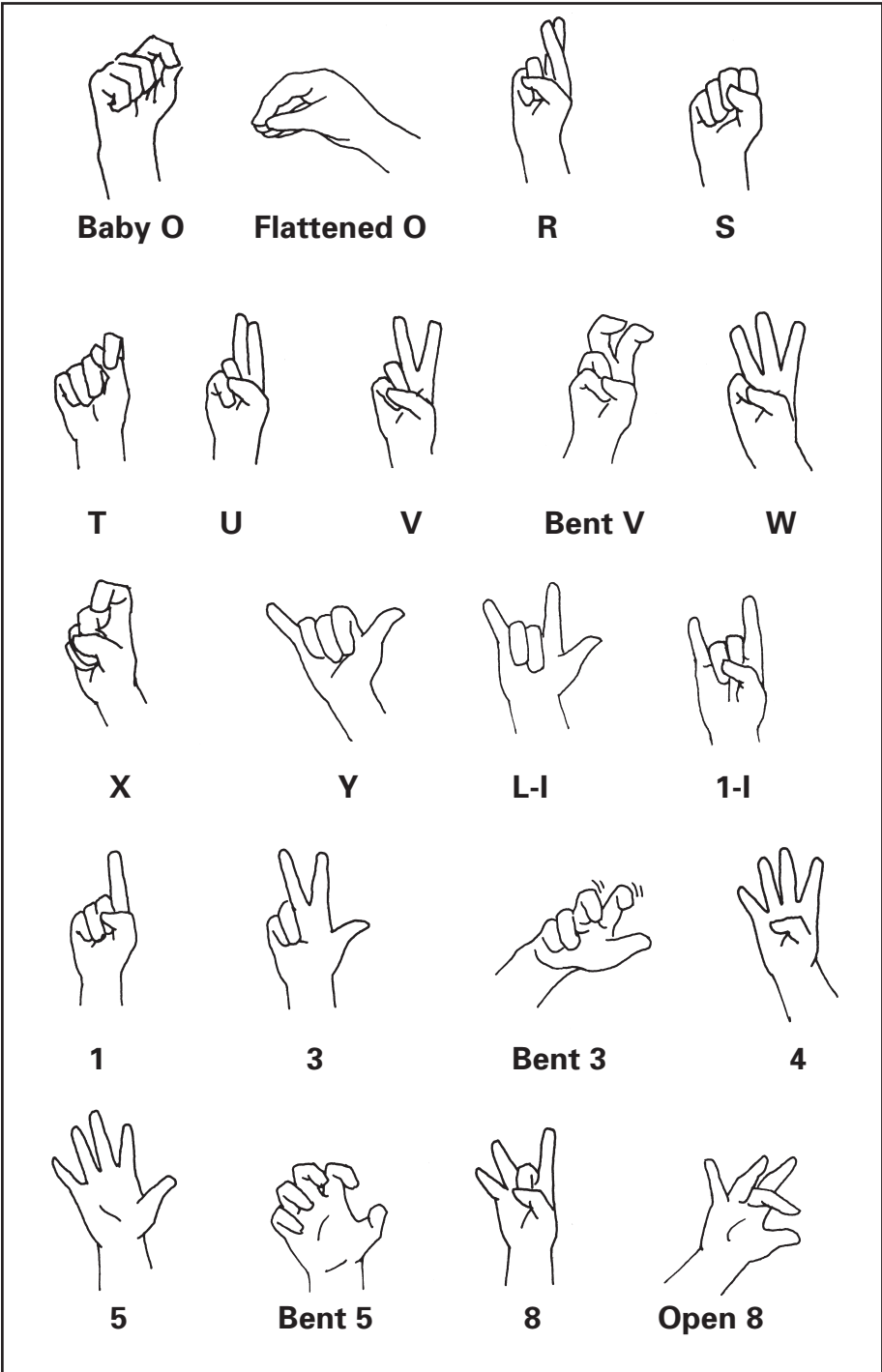
N



Open N



O



Baby O

Flattened O

R

S

T

U

V

Bent V

W

X

Y

L-I

1-I

1

3

Bent 3

4

5

Bent 5

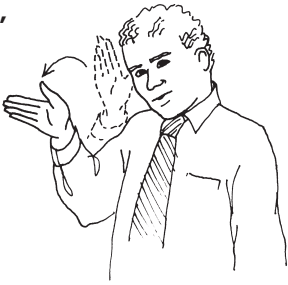
8

Open 8

2

Question Words

**will, shall,
would**



Handshape: Open B
Orientation: palm left
Location: near head
Movement: move hand forward while tipping fingers forward

**what-to-do,
what**



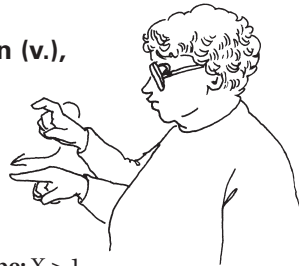
Handshape: G > Baby O
Orientation: palm up
Location: neutral space
Movement: bring index finger and thumb together twice
Nonmanual signal: body leans forward, head tilts right, "puzzled" expression

who, whom



Handshape: L > Bent L
Orientation: palm left
Location: thumb on chin
Movement: bend index finger down twice

**query, ask,
inquire,
question (v.),
quiz**



Handshape: X > 1
Orientation: palm out
Location: neutral space
Movement: use index finger to draw a question mark, changing to 1 handshape

why



Handshape: L-I
Orientation: palm in
Location: near forehead
Movement: bend middle two fingers down and up several times
Nonmanual signal: body leans forward; head tilts right; "curious" expression

where



Handshape: 1
Orientation: palm out
Location: neutral space
Movement: shake hand side to side
Nonmanual signal: body leans forward; head tilts right; "questioning" frown

6 People

aunt



Handshape: A
Orientation: palm out
Location: right cheek
Movement: move thumb down cheek in two short movements
Note: Movement may be circular.

herself, himself, itself



Handshape: Open A
Orientation: palm left
Location: neutral space
Movement: double bounce toward referent
Nonmanual signal: eyes on the person to whom you are speaking

yourself



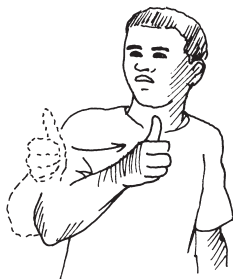
Handshape: Open A
Orientation: palm left
Location: neutral space
Movement: double bounce toward referent
Nonmanual signal: eyes on referent

yourselves



Handshape: Open A
Orientation: palm left
Location: neutral space
Movement: arc thumb from left to right in front of chest
Nonmanual signal: eyes on people to whom you are speaking

themselves



Handshape: Open A
Orientation: palm left
Location: neutral space
Movement: arc thumb right to left toward referents
Nonmanual signal: eyes on person to whom you are speaking

girl



Handshape: Open A
Orientation: palm left
Location: thumb on cheek
Movement: brush thumb forward on cheek twice

**daily, common,
everyday,
ordinary,
usual**



Handshape: Open A
Orientation: palm left
Location: right cheek
Movement: brush knuckles down
cheek twice

yesterday



Handshape:
Open A
Orientation:
palm out
Location: near mouth
Movement: arc thumb back to touch
cheek
Nonmanual signal: right shoulder lifts
up; head tilts right; "cz" mouth
movement

tomorrow



Handshape: Open A
Orientation: palm left
Location: right cheek
Movement: twist wrist forward
Nonmanual signal: right shoulder lifts up;
head tilts right; "cz" mouth movement

a few days ago



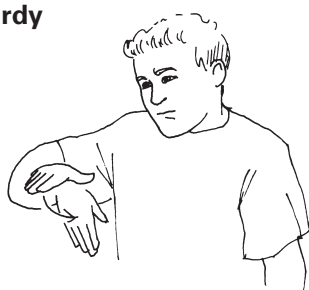
Handshape: Open A > 3
Orientation: palm down
Location: thumb on cheek
Movement: flip hand back while
changing to 3 handshape

never



Handshape: B
Orientation: palm left
Location: in front of face
Movement: move hand down with
large wavy motion
Nonmanual signal: head shakes "no"

late, tardy



Handshape: Open B
Orientation: palm down
Location: neutral space
Movement: swing fingers back

15

Colors

blue



Handshape: B
Orientation: palm left
Location: neutral space
Movement: twist wrist back and forth twice

brown



Handshape: B
Orientation: palm out
Location: cheek
Movement: slide index finger down cheek

orange



Handshape: C > S
Orientation: palm left
Location: near mouth
Movement: open and close fist twice

green



Handshape: G
Orientation: palm up
Location: neutral space
Movement: twist hand up and down several times